

Rounthwaite R&W Woodhead

53 MARKET PLACE, MALTON, NORTH YORKSHIRE, YO17 7LX Tel: (01653) 600747

51 GREENGATE, MALTON, YO17 7EL



- Attractive stone built terraced property
 - First floor bathroom
 - Well presented throughout

- Two bedrooms
- Close to the centre of Malton
- Courtyard garden

PRICE GUIDE £167,500

Also at: 26 Market Place, Kirkbymoorside Tel: (01751) 430034 & Market Place, Pickering Tel: (01751) 472800

Email: malton@rounthwaite-woodhead.co.uk

www.rounthwaite-woodhead.com

Description

This attractive stone built terraced property is just a short stroll from the heart of Malton and is an ideal first-time home or buy to let opportunity. Well maintained and tastefully decorated throughout, the neutral tones and attractive features are sure to appeal to a range of potential buyers.

To the ground floor is a good-sized reception room and kitchen to the rear with two bedrooms and house bathroom to the floor above.

Externally, the benefits include an enclosed courtyard style garden and small brick-built store. Offered for sale with no forward chain.

Malton offers an excellent range of amenities with a Bus Station and Railway Station providing links to the Intercity service at York. The A64, which by-passes the town, provides road links both East and West and access to the motorway network. There are a variety of local sporting and social clubs, an interesting range of independent shops and eating establishments. Malton is well located for the Coast, the Moors, the Wolds and is surrounded by lovely countryside.

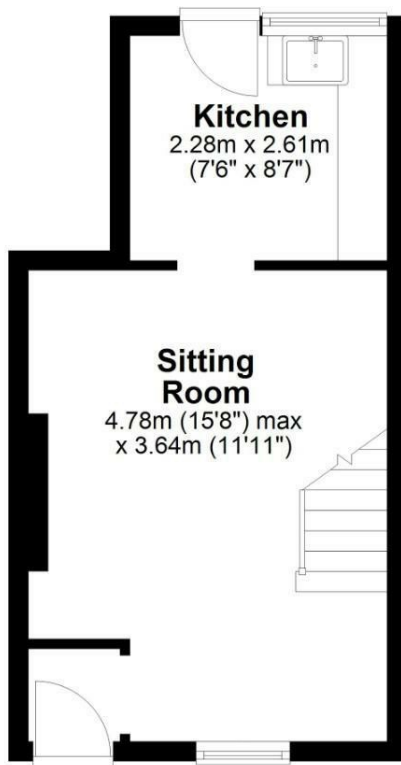
General Information



Accommodation

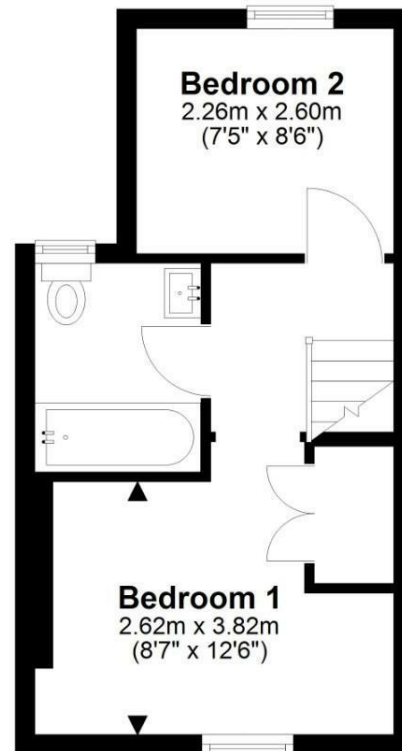
Ground Floor

Approx. 23.6 sq. metres (254.1 sq. feet)



First Floor

Approx. 23.6 sq. metres (254.1 sq. feet)



Total area: approx. 47.2 sq. metres (508.3 sq. feet)

51 Greengate, Malton

Energy Efficiency Rating		
	Current	Potential
Very energy efficient - lower running costs		
(92 plus) A		
(81-91) B		
(69-80) C		
(55-68) D		
(39-54) E		
(21-38) F		
(1-20) G		
Not energy efficient - higher running costs		
	70	79
England & Wales		
	EU Directive 2002/91/EC	

Environmental Impact (CO ₂) Rating		
	Current	Potential
Very environmentally friendly - lower CO ₂ emissions		
(92 plus) A		
(81-91) B		
(69-80) C		
(55-68) D		
(39-54) E		
(21-38) F		
(1-20) G		
Not environmentally friendly - higher CO ₂ emissions		
England & Wales		
	EU Directive 2002/91/EC	



Messrs Rounthwaite & Woodhead for themselves and their vendors and lessors whose agents they are give notice that these particulars are produced in good faith, set out as a general guide only and do not constitute any part of a contract. No person employed by Messrs Rounthwaite & Woodhead has any authority to make or give any representation or warranty whatsoever in relation to this property. The dimensions in the sales particulars are approximate only and the accuracy of any description cannot be guaranteed. Reference to machinery, services and electrical goods does not indicate that they are in good or working order. All reference to prices and rents etc. exclude VAT which may apply in some cases.

Covering Ryedale through offices in Malton, Pickering and Kirkbymoorside
www.rounthwaite-woodhead.com

Rounthwaite **R&W** Woodhead